

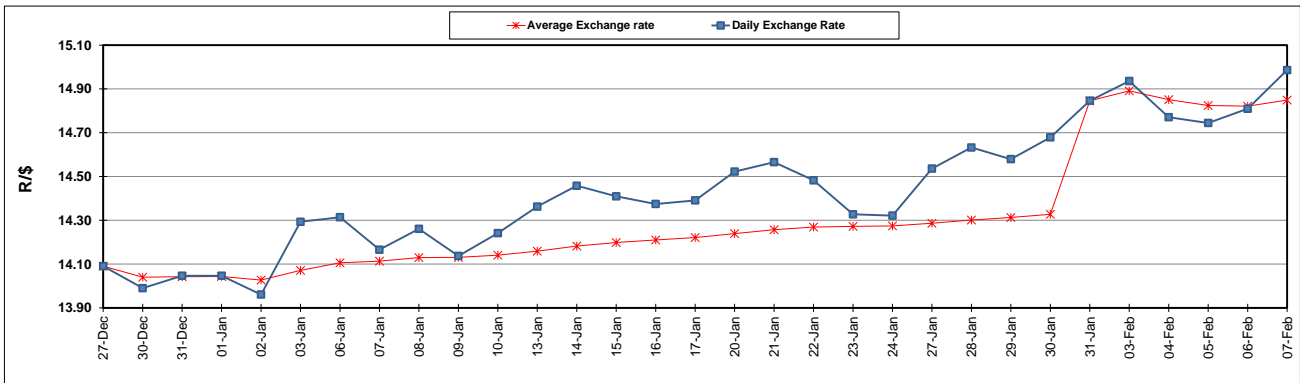
	PETROL 95 ULP	PETROL 93 ULP & LRP	DIESEL 0.05%	DIESEL 0.005%	ILL. PAR.
GAUTENG PUMP PRICE (SA c/l) AS FROM 05/02/2020	1,603.000	1,571.000	-	-	-
WHOLESALE PRICE (SA c/l) AS FROM 05/02/2020	-	-	1,457.260	1,462.660	924.728
SINGLE NATIONAL MAXIMUM RETAIL PRICE	-	-	-	-	1,176.000
BASIC FUEL PRICE - 07/02/2020 (SA c/l)	673.741	663.571	698.377	704.628	680.567
PRESS RELEASE CONTRIBUTION TO BFP 05/02/2020 - 07/02/2020 (SA c/l)	686.970	664.970	737.630	743.030	734.128
UNIT OVER/(UNDER) RECOVERY - 07/02/2020 (SA c/l)	13.229	1.399	39.253	38.402	53.561
AVERAGE BASIC FUEL PRICE 31/01/2020 - 07/02/2020	663.419	652.286	683.523	689.190	669.816
AVERAGE UNIT OVER/(UNDER) RECOVERY 31/01/2020 - 07/02/2020	30.051	19.184	56.607	56.341	65.812

### ANALYSIS MOVEMENT OF AVERAGE OVER/(UNDER) RECOVERY

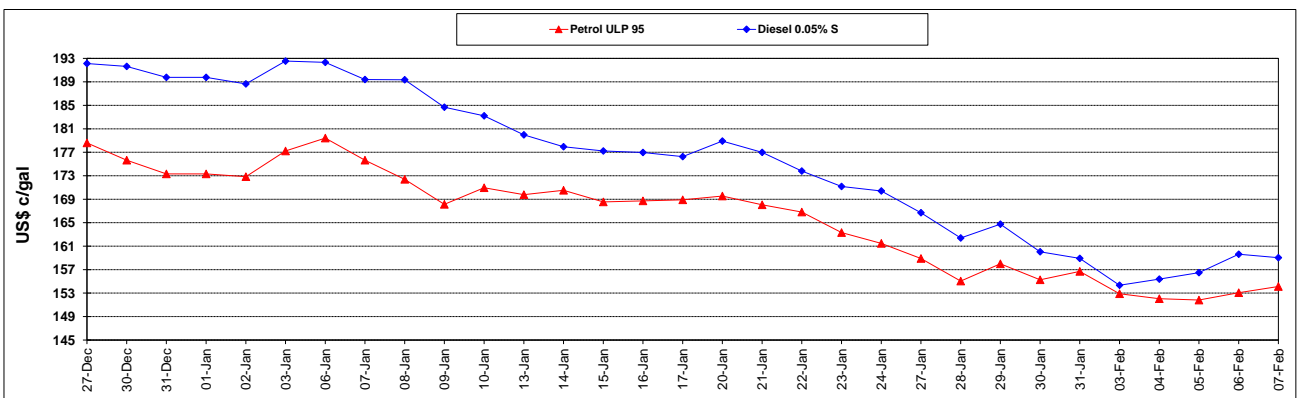
	PETROL 95	PETROL 93	DIESEL 0.05%	DIESEL 0.005%	ILL. PAR.
- MOVEMENT IN INTERNATIONAL PRODUCT PRICES	53.342	42.084	80.603	80.535	89.327
- MOVEMENT IN EXCHANGE RATE	(23.291)	(22.900)	(23.996)	(24.195)	(23.515)
AVERAGE UNIT OVER/(UNDER) RECOVERY 31/01/2020 - 07/02/2020	30.051	19.184	56.607	56.341	65.812

R/\$ EXCHANGE RATE - (R/\$14.9863 - 07/02/2020)

### EXCHANGE RATE USED IN BASIC FUEL PRICE



### INTERNATIONAL PRODUCT PRICES OF BASKET USED IN BASIC FUEL PRICE



### BASIC FUEL PRICE IN SA CENTS PER LITRE

